

T2 7 SERIES

The T2 7 SERIES is built for demanding arable and vegetable operations where power, soil protection, and efficiency are critical. With 230 hp and a soil-friendly tracked design, it is ideally suited for:

- ✓ Deep tillage and heavy cultivation
- ✓ Seeding and planting large areas
- ✓ Pulling wide implements
- ✓ Working in sloping conditions and heavy soils



TECHNICAL SPECIFICATIONS

Drive train

Deutz Diesel Engine

5.2 l 4-stroke Deutz Diesel Engine, Stage V
170 kW / 230 hp, max. torque 950 Nm

Electric driven PTO

Optional direct-driven PTO
(1,000 rpm front and rear)

Electric drive train

Electric drive train with a speed range from 0–13.0 km/h

HighVoltage connectors

Optional AEF High Voltage Connector up to 150 kW,
700 V front and rear

Diesel tank

520l diesel tank, 50l AdBlue tank



Hydraulics

Hydraulic pump

170 l/min at 210 bar

Rear linkage

Three-point rear linkage Cat III –
9 t maximum lift capacity at hooks

Front linkage

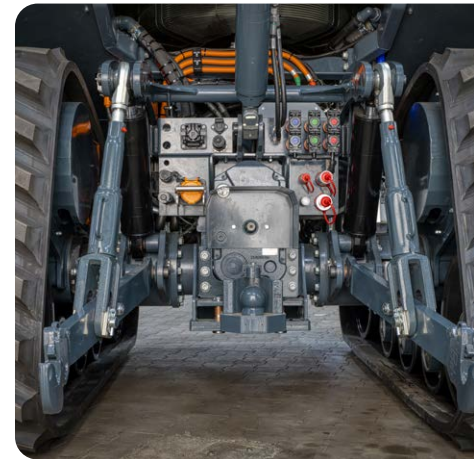
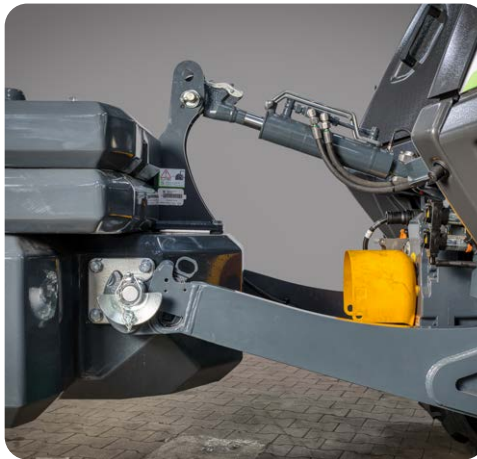
Three-point front linkage Cat II –
4 t maximum lift capacity at hooks

Load sensing

Optional load sensing

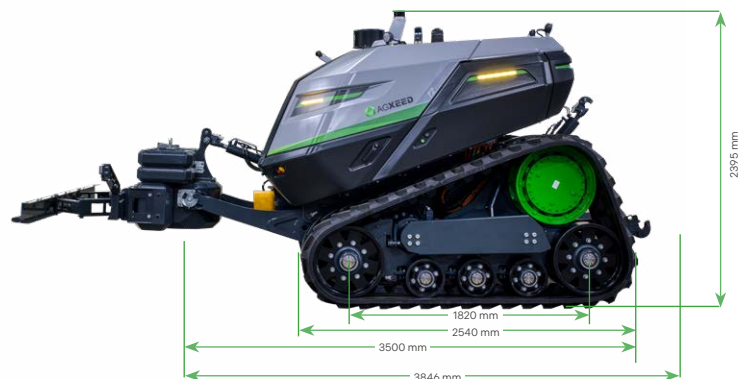
Spool valves

Up to 4 double-acting proportional spool valves
rear or 3 in the rear and 1 in the front



Machine dimensions

Length:	3846 mm
Height:	2070 mm vehicle 2400 mm lidar
Width:	2550–4100 mm (depending on track setup)
Empty weight:	7.8–8.2 t
Wheelbase:	2550–4100 mm
Compact transport	width from 2550 mm (depending on setup)



All specifications and dimensions undergo continuous development processes. Values and configurations may change over time.

Safety measures 7 30 MX

- ✓ Geofence system
- ✓ Visual indicator lights
- ✓ Audible warning alarm
- ✓ Emergency stop buttons around the machine

Obstacle detection system 8 30 MX

- ✓ LIDAR sensor on the top of the machine
- ✓ Ultrasonic sensors integrated into the safety bumper
- ✓ Radar sensors integrated into the safety bumper
- ✓ Contact sensitive bumper integrated into the safety bumper

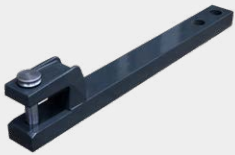
Track configuration

Variable track center adjustment

Crop clearance: 450 mm

<p>TRACK TYPE 300 mm</p> <p>TRACK WIDTH 1500-2250 mm</p> <p>TRACK WIDTH WITH SPACERS 3200 mm</p>	<p>TRACK TYPE 400 mm</p> <p>TRACK WIDTH 1500-2250 mm</p> <p>TRACK WIDTH WITH SPACERS 3200 mm</p>	<p>TRACK TYPE 610 mm</p> <p>TRACK WIDTH 1900-2250 mm</p> <p>TRACK WIDTH WITH SPACERS 3200 mm</p>	<p>TRACK TYPE 760 mm</p> <p>TRACK WIDTH 1900-2250 mm</p> <p>TRACK WIDTH WITH SPACERS 3200 mm</p>	<p>TRACK TYPE 910 mm</p> <p>TRACK WIDTH 2000-2250 mm</p> <p>TRACK WIDTH WITH SPACERS 3200 mm</p>
---	---	---	---	---

Accessories



Drawbar insert K80
(4000 kg)

Drawbar insert Cat III
(3000 kg)

COMMUNICATION AND POSITIONING

Communications module for **bidirectional data transfer and RTK correction RTK**

- ✓ Integrated 4G com unit
- ✓ Two independent GNSS RTK receivers for safe positioning, guidance, and heading



TRAXWISE

TraXwise the intelligent platform at the heart of every AgXceed solution. It connects preplanning, monitoring, and data into one clear system, giving farmers grip on their work and peace of mind in every season.



Pre-planning

including pre-planning of implements



Live monitoring

realtime tracking and control



Data management

store, share, analyze