

## Picture report 123456 - Header data

Machine No.    Machine designation    Oper.hours Acres Bales Loads    Carried out on  
 Country                    Region                    Sales partner                    Technician

## Long text

### Inspection Pilot

## Failures

### ENGINE

1 / 61

**Valve lash:**  
 Check the valve lash if necessary. Observe the maintenance requirements based on operating hours and records.

Failure    Remedy  
**worn    set**

Description  
**Valve clearance check is due.**

### ENGINE

2 / 61

**Fuel supply:**  
 Check the condition and tightness of fuel filters, fuel prefilters and of lines.

Failure    Remedy  
**worn    change**

Description  
**Fuel filters are due to be changed.**

Material No.	Description	Group	Quantity
0027673620	FILTER ELEMENT	0125 - INJECTION / FUEL SYSTEM	1 piece
0007732230	FUEL FILTER	0125 - INJECTION / FUEL SYSTEM	1 piece

### ENGINE

3 / 61

**Engine oil filter:**  
 Check the tightness of the oil filter housing. Observe the maintenance requirements based on operating hours and records.

Failure    Remedy  
**worn    change**

Description  
**Engine oil and filters are due to be changed.**

**ENGINE** 4 / 61

**Cooling liquid / antifreeze**  
 Check the engine coolant level and the degree of freezing protection.

Failure Remedy  
**worn replace**

Description  
 Coolant is due to be changed

**ENGINE** 5 / 61

**Checking the radiator:**  
 Check the condition, tightness and function of all coolers and lines.

Failure Remedy  
**dirty clean**

Description  
 Clean radiators

**ENGINE** 6 / 61

**Fan gearbox**  
 Check the condition, tightness, oil level and bearing clearance of the fan gearbox.

Failure Remedy  
**worn change**

Description  
 Fan gearbox is due for an oil change.

**ENGINE** 7 / 61

**Dry-type air cleaner:**  
 Check the proper sealing and the cleanliness of the air filter and if it is cracked. Suggest a replacement according to the operating hours/annual maintenance interval.

Failure Remedy  
**dirty change**

Description  
 Air filters are due for replacement.

Material No.	Description	Group	Quantity
0024022701	AIR FILTER ELEMENT	0145120 - AIR FILTER	2 piece

**GEARBOX / CLUTCH / PTO DRIVE SHAFT** 8 / 61

**Transfer gearbox / bearing:**  
 Check if the transfer gearbox and the bearing has any particles adhering to the speed sensor and if there is any bearing damage.  
 Remove/install the sensor for this check.

Failure Remedy  
**worn change**

Description  
 Transfer gearbox is due for an oil change.

**CHASSIS**

9 / 61

**Front axle final drive:**  
 Check the oil level in the front axle final drive. Write down the level. Observe the maintenance intervals and operating hours and change the oil if required.

Failure Remedy  
**worn change**

Description  
 Front axle diff and final drives are due for an oil change.

**CHASSIS**

10 / 61

**Tyres and rim of the front axle**  
 Check the condition and tightness of the tyres and the tightening torque of wheel bolts.

Failure Remedy  
**worn replace**

Description  
 LH front tyre is bald.  
 RH front tyre is at 30% remaining

**CHASSIS**

11 / 61

**Rear axle tyres and rims:**  
 Check the condition and tightness of the rear wheel and the rim condition.

Failure Remedy  
**worn replace**

Description  
 LH rear tyre is worn out.  
 RH rear tyre is at 30% remaining.



**STEERING SYSTEM**

12 / 61

**Steering column / steering wheel adjustment**  
 Check if the steering column is cracked, adjustable and firmly fastened.

Failure Remedy  
**no function repair**

Description  
 Top of steering column won't adjust.  
 Suspect adjustment of gas strut.

**Trailer hitch**

13 / 61

**Trailer hitch:**  
Check if the trailer hitch is cracked and if it is properly attached to the machine.

Failure    Remedy  
**no function    replace**

Description  
Draw bar pin is missing.

**DRIVES**

14 / 61

**V-ribbed belt of the main drive:**  
Check the V-ribbed belt of the main drive for condition and cracks.

Failure    Remedy  
**dirty    clean**

Description  
Check for small stones lodged in the belt.  
Check for cracks in the backing of the belt.

**DRIVES**

15 / 61

**Feeder drive V-belt:**  
Check the condition and wear of the feeder drive ribbed V-belt.

Failure    Remedy  
**incomplete    replace**

Description  
Feed roller drive belt was missing.  
Not critical.  
Orbis 600 can be run on the variable header drive.

**DRIVES**

16 / 61

**Belt guard:**  
Check the condition of belt guard and if it is cracked and properly fastened.

Failure    Remedy  
**incomplete    replace**

Description  
Feeder drive belt cover was missing.

**DRIVES**

17 / 61

**Jockey and guide rollers:**  
Check that the jockey pulleys move freely and check the bearings for play.

Failure    Remedy  
**dirty    clean**

Description  
Release the belt tension.  
Check idler bearings.  
Clean the pulley grooves.

**DRIVES**

18 / 61

**Corn cracker jockey pulley:**  
Check that the jockey pulley runs smoothly and check the bearings for play.

Failure Remedy  
**worn clean**

Description  
Clean around pulley and grease bearings.

**HYDRAULICS**

19 / 61

**Hydraulic oil filter:**  
Check the condition and tightness of the hydraulic oil filter.

Failure Remedy  
**worn change**

Description  
Hdraulic filter and oil is due to be changed

**ELECTRICS / ELECTRONICS**

20 / 61

**Cab wiring:**  
Check the condition, routing and fixing of the cab wiring as well as loose plug contacts.

Failure Remedy  
**Setting not correct set**

Description  
Move chute camera screen to above window wiper.  
Remove wiring from RH pillar and move to floor and up steering column.

**ELECTRICS / ELECTRONICS**

21 / 61

**Checking the turn flashers:**  
Check the condition, fastening on the machine and the function of turn flashers.

Failure Remedy  
**dirty clean**

Description  
Front marker lights are full of water.  
Remove lenses and clean.  
Refit with sealer.

**ELECTRICS / ELECTRONICS**

22 / 61

**Checking the discharge flap lights adjustment:**  
Check the function and fastening of the discharge flap lights as well as the correct adjustment of the discharge flap.

Failure Remedy  
**Setting not correct set**

Description  
Set chute flap to grass position.

**ELECTRICS / ELECTRONICS**

23 / 61

**Deleting fault codes in the CDS:**  
Delete all fault codes in the CLAAS DIAGNOSTIC SYSTEM.

Failure                      Remedy  
**Setting not correct**    **set**

Description  
**Service counters to be reset.**  
**Delete previous owners job notes.**

**ELECTRICS / ELECTRONICS**

24 / 61

**Software update:**  
Check the software status with the CDS, record the statuses and prepare a quotation. Prepare a machine report.

Failure                      Remedy  
**Setting not correct**    **set**

Description  
**Update all software to current versions**

**ELECTRICS / ELECTRONICS**

25 / 61

**Carrying out a test run:**  
No persons are allowed in the hazard area during the test run. Now check all machine functions in a test run. To do this, check the speeds in CEBIS and check all teaching-in processes for limit switches, the hydrostatic feeder drive speeds and quick stop as specified in the Technical Systems documentation; check the emergency brake function.

Failure                      Remedy  
**Setting not correct**    **set**

Description  
**Test drive on the road.**  
**Test brakes.**  
**Calibrate hydrostatic drive.**  
**Learn all end stops.**

**ELECTRICS / ELECTRONICS**

26 / 61

**Control terminal:**  
Check all control terminal functions.

Failure                      Remedy  
**broken off**                **replace**

Description  
**Phone holder broken.**  
**Fit new passive charging phone holder.**

**ELECTRICS / ELECTRONICS**

27 / 61

**NIR sensor measuring head unit:**  
Check if the glass is clean.

Failure                      Remedy  
**dirty**                        **clean**

Description  
**Clean NIR sensor.**  
**Check adjustment of lense protrusion.**  
**Calibrate with white stone.**

**CAB / OPERATOR'S PLATFORM**

28 / 61

**Checking the cab filter:**  
 Check the proper sealing and the cleanliness of the cab filter and if it is cracked. Suggest a replacement according to the operating hours/annual maintenance interval.

Failure Remedy  
**dirty replace**

Description  
**Fit new cab filters.**  
 Remove roof panel  
 Blow out a/c and heater cores.  
 Check heater hoses for rodent damage.

Material No.	Description	Group	Quantity
0005596460	POCKET FILTER	1210120 - EXTERIOR ROOF TRIM	2 piece

**CAB / OPERATOR'S PLATFORM**

29 / 61

**Cooler compartment / cool box:**  
 Check the condition of the cooler compartment and if it cools properly.

Failure Remedy  
**dirty clean**

Description  
**Clean out cooler box.**

**CAB / OPERATOR'S PLATFORM**

30 / 61

**Windscreen wiper motor:**  
 Check the function and proper hose and wiring guiding of the windscreen wiper motor.

Failure Remedy  
**worn replace**

Description  
**Fit new wiper blades.**  
 Front, left, right and rear wiper blades.  
 Use aftermarket wiper blade refills.

Material No.	Description	Group	Quantity
0005470390	WIPER BLADE	1210400 - FRONT WINDSCREEN WIPER	1 piece

**CAB / OPERATOR'S PLATFORM**

31 / 61

**Windscreen washer:**  
 Check the condition of windscreen wipers and the function of nozzles.

Failure Remedy  
**Fill level too low refill**

Description  
**Fill window washers.**  
 Add 2 X additive bottles.

**CAB / OPERATOR'S PLATFORM**

32 / 61

**Armrest adjustment:**  
Check the condition and function of the armrest adjustment.

Failure      Remedy  
**no function    repair**

Description  
The arm rest won't lift.  
For and aft function works.

**CROP FEEDING**

33 / 61

**PTO drive:**  
Check the condition, wear and good lubrication of the front attachment PTO shaft.

Failure    Remedy  
**worn    clean**

Description  
Remove and lubricate drive shafts for feeder and header drive.

**FEEDER UNIT**

34 / 61

**Feeder unit floor plate:**  
Check the condition, proper sealing and wear of the feeder unit floor plate.

Failure      Remedy  
**no function    replace**

Description  
Grain loss tray was not with machine.

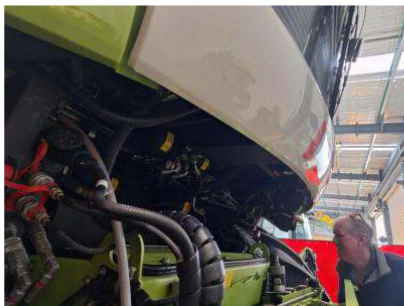
**FEEDER UNIT**

35 / 61

**Dirt protection roller blind:**  
Check the condition and function of the dirt protection roller blind.

Failure      Remedy  
**broken off    replace**

Description  
Roller blind is missing



**FEEDER UNIT**

36 / 61

**Gearbox of the precompression rollers**  
 Check the condition and tightness of the precompression rollers' gearbox as well as its oil level. Remove the speed sensor, check if it is soiled and clean it.

Failure Remedy  
**worn change**

Description  
**Feeder gearbox is due for an oil change.**  
**Remove and clean speed sensor.**

**FEEDER UNIT**

37 / 61

**Feeder unit hydraulic cylinder:**  
 Check the condition, tightness and cylinder rod condition of the hydraulic pre-compression hydraulic cylinder.

Failure Remedy  
**leaky repair**

Description  
**Oil leaking from the RH side ram.**  
**Reseal ram.**

Material No.	Description	Group	Quantity
0001516870	SEAL KIT	2105840 - FEEDER DRIVE HYDRAULIC CYLINDER	1 piece



**FEEDER UNIT**

38 / 61

**Lower precompression rollers:**  
 Check the condition and wear of the lower pre-compression rollers.

Failure Remedy  
**damaged repair**

Description  
**Lower front roller is cracked.**  
**Remove and strip roller.**  
**Have roller rewelded to prevent metal detector issues.**  
**Demagnetise rollers and feeder housing.**

**FEEDER UNIT**

39 / 61

**Checking the spindle swing torque:**  
 Check the spindle swing torque as well as its condition regarding corrosion and wear.

Failure Remedy

**dirty clean**

Description

**Lubricate and reset**

**FEEDER UNIT**

40 / 61

**Gearbox of the upper rollers:**  
 Check the condition and tightness of the upper roller gearbox as well as its oil level.

Failure Remedy

**worn change**

Description

**Feed roller gearbox due for an oil change.**

**CHOPPING**

41 / 61

**Shear bar support:**  
 Check the condition and wear of the shear bar support.

Failure Remedy

**dirty clean**

Description

**Remove anvil.  
 Clean and lubricate.  
 Refit and set.**

**CHOPPING**

42 / 61

**Cutting cylinder knives:**  
 Check the condition of the cutting cylinder knives and if they are worn or cracked.  
 Note: For wear limits and replacement recommendations, see the Operator's Manual.

Failure Remedy  
 worn replace

Description  
 Fit new 1/2 set of grass knives.  
 Fit wear plates where there are no knives.

Material No.	Description	Group	Quantity
0026387010	R/H KNIFE KIT	4420100 - CUTTING CYLINDER	3 piece
0026387000	L/H KNIFE KIT	4420100 - CUTTING CYLINDER	3 piece
0013909001	COVERING	4420100 - CUTTING CYLINDER	12 piece



**CHOPPING**

43 / 61

Sharpening unit with chain and adjustment:  
 Check the correct chain tension and cleanliness of the sharpening unit. Is the coupler finger still in place?

Failure Remedy  
 dirty clean

Description  
 Clean around grindstone.  
 Fit new grindstone.  
 Lubricate chain and slides.

Material No.	Description	Group	Quantity
0013904550	GRINDSTONE	4425100 - KNIFE SHARPENER	1 piece



**CHOPPING**

44 / 61

Sharpening stone:  
 Check if the sharpening stone is worn and adjust as needed. NOTE: Checking the status in CEBIS

Failure Remedy  
 Setting not correct set

Description  
 Reset grind cycle counter on Cebis.  
 Reset Knife condition.

**DISCHARGING**

45 / 61

Corncracker housing  
 Check the housing wear, the condition of bearings and if coarse soiling has occurred.

Failure Remedy  
 dirty replace

Description  
 Clean Corn Cracker.  
 Fit new bearings.  
 Corn Cracker was not with machine when viewed.

Material No.	Description	Group	Quantity
0002176541	SPHERICAL ROLLER BEARING	6205100 - HOUSING	4 piece

**DISCHARGING**

46 / 61

**Corn cracker gap adjustment:**  
Check if the rollers are parallel with respect to one another.

Failure      Remedy

**Setting not correct**    **set**

Description

Set corn cracker gap to 2mm'  
Set corn cracker gap in cebis to 2mm.

**DISCHARGING**

47 / 61

**Corncracker rolling**  
Check the condition and wear of corn cracker rollers.

Failure    Remedy

**worn**    **change**

Description

Corn Cracker rollers are worn out.  
Fit new Premium rollers.  
Corn Cracker was not with machine when viewed.

Material No.	Description	Group	Quantity
0029436970	ROLLER ASS.	6205150 - ROLLERS, FRONT	1 piece
0029395420	ROLLER ASS.	6205150 - ROLLERS, FRONT	1 piece

**DISCHARGING**

48 / 61

**Accelerator bearings:**  
Check the wear of the accelerator bearings, using a dial indicator.

Failure    Remedy

**worn**    **change**

Description

Accelerator bearings are due to be changed.

Material No.	Description	Group	Quantity
0027530190	SPHERICAL ROLLER BEARING	6215150 - ACCELERATOR	2 piece
0027854470	HOUSING COVER	6215150 - ACCELERATOR	2 piece

**DISCHARGING**

49 / 61

**Electric accelerator gap adjustment:**  
Check the function of the accelerator electric gap adjustment. Compare the CEMIS value with the actual gap.

Failure      Remedy

**Setting not correct**    **set**

Description

Learn end stops of accelerator gap.

**DISCHARGING**

50 / 61

Upper discharge chute:  
Check the condition and wear of the upper discharge chute.

Failure Remedy  
**worn replace**

Description  
Chute liner worn through.  
Fit new liner.  
Clean inside of chute while liner is off.

Material No.	Description	Group	Quantity
0024017591	WEAR PLATE	6230150 - UPPER DISCHARGE CHUTE EXTENSION	1 piece

**DISCHARGING**

51 / 61

Upper discharge flap:  
Check if the upper discharge flap is worn or cracked and carry out a function test.

Failure Remedy  
**orn clean**

Description  
Remove hazard panel from flap.

**DISCHARGING**

52 / 61

Silage additive system (ACTISILER) tank:  
Check if the silage additive system (ACTISILER) tank is tight or damaged.

Failure Remedy  
**dirty clean**

Description  
Remove and clean actisiler tank and water tank.

**DISCHARGING**

53 / 61

Silage additive system pump:  
Check the condition, tightness and function of the silage additive system pump.  
If possible, check the silage additive system flushing function.

Failure Remedy  
**dirty clean**

Description  
Clean water tank.  
Check operation of water pump.

**DISCHARGING**

54 / 61

Filter for silage additive system:  
Check the condition, tightness and function of the silage additive system filter.

Failure Remedy  
**dirty clean**

Description  
Remove and clean filter.

**DISCHARGING**

55 / 61

Dosing unit ACTISILIER:  
Check the condition and function of the ACTISILER dosing unit.

Failure      Remedy  
**damaged    replace**

Description  
Actisiler hose needs to be replaced.

Material No.	Description	Group	Quantity
0026415780	HOSE RETAINER	6235200 - METERING SYSTEM	2 piece



**CENTRAL LUBRICATION SYSTEM**

56 / 61

Lubricant reservoir:  
Check the condition and fill level of the lubricant reservoir.

Failure      Remedy  
**Fill level too low    refill**

Description  
Fill greaser

**ATTACHMENT PARTS, MACHINE BODY**

57 / 61

Checking the right side panel:  
Check the condition of the right side panel including the damper, and see if it is cracked. Leave in the open position.

Failure      Remedy  
**Setting not correct    set**

Description  
Check for cracks around gas strut area.  
Door has been removed for painting, check door is fitted correctly.  
Check adjustment of door latches

**ATTACHMENT PARTS, MACHINE BODY**

58 / 61

Checking if the left side panel is cracked:

Check the condition of the left side panel including the damper, and see if it is cracked. Leave in the open position.

Failure                      Remedy

**Setting not correct    set**

Description

Check LH door for cracks around the gas strut area.

Door has been removed for painting, check it has been refitted properly.

Check adjustment of door latches.

**ATTACHMENT PARTS, MACHINE BODY**

59 / 61

Rear weight, ballast weights:

Check the condition and proper fastening.

Failure    Remedy

**bent    replace**

Description

Rear bumper needs to be repainted.



**ENTIRE MACHINE**

60 / 61

Recording the customer's issues:

Ask customers about problems during the harvest and make a note of them. To do this, click on the X in the checkpoint.

Failure                      Remedy

**no function    replace**

Description

Give me a new chopper

**ENTIRE MACHINE**

61 / 61

Test drive

- Carry out a test drive.- Check the service brake and the parking brake.- Drive the machine in all forward gears and all reverse gears.- Check the maximum ground speed forward.- Check the function of all control elements, switches and monitoring devices.

Failure                      Remedy

**Setting not correct    set**

Description

Test drive.

Check brakes .

Check emergency stop valve.

Calibrate hydrostat.



## Checks

Description	Group	Result	Duration
Engine oil level and tightness:	ENGINE	OK	
Engine oil level and tightness: Check the tightness of the engine and its correct oil level.			
Cooling hoses:	ENGINE	OK	
Cooling hoses: Check the tightness and condition of the charge air and coolant hoses as well as the hose clamps.			
Engine oil filter:	ENGINE	NOK	3.0
Engine oil filter: Check the tightness of the oil filter housing. Observe the maintenance requirements based on operating hours and records.			
Cooling liquid / antifreeze	ENGINE	NOK	2.0
Cooling liquid / antifreeze Check the engine coolant level and the degree of freezing protection.			
Valve lash:	ENGINE	NOK	3.0
Valve lash: Check the valve lash if necessary. Observe the maintenance requirements based on operating hours and records.			
Air intake hoses:	ENGINE	OK	
Air intake hoses: Check the condition and routing of the air intake hoses, and that the retaining clamps are secure.			
Engine supports:	ENGINE	OK	
Engine supports: Check the engine supports and their mounting bolts.			
Alternator:	ENGINE	OK	
Alternator: Check the shaft bearing clearance. Check if the alternator mounting support is cracked and if the wiring is tightly seated.			
Alternator performance monitoring:	ENGINE	OK	
Alternator performance monitoring: Check the alternator output and ensure that it charges as expected.			
Refrigerant compressor:	ENGINE	OK	
Refrigerant compressor: Check the condition and tightness of the refrigerant compressor.			
V-belts / jockey pulleys:	ENGINE	OK	
V-belts / jockey pulleys: Check the wear, belt guiding and bearing condition of belts and pulleys.			

Description	Group	Result	Duration
Checking the water pump:	ENGINE	OK	
Checking the water pump: Check the water pump for leaks and the bearing for play.			
V-belt fan	ENGINE	OK	
V-belt fan Check if the fan belts are cracked and show any signs of slip.			
Fan drive jockey pulley:	ENGINE	OK	
Fan drive jockey pulley: Check the pulley wear range and ensure that the belt is properly tensioned.			
Engine control unit:	ENGINE	OK	
Engine control unit: Check the condition of plug-in connectors and seals and if the plug-in contacts are corroded.			
Fan vario drive:	ENGINE	OK	
Fan vario drive: Check the condition of the fan vario drive, if it is cracked and check the pulley clearance.			
Fan gearbox	ENGINE	NOK	1.0
Fan gearbox Check the condition, tightness, oil level and bearing clearance of the fan gearbox.			
Fan blades:	ENGINE	OK	
Fan blades: Check if the fan blades and the fan cowling is damaged.			
Fuel supply:	ENGINE	NOK	1.0
Fuel supply: Check the condition and tightness of fuel filters, fuel prefilters and of lines.			
Fuel tank	ENGINE	OK	
Fuel tank Check the condition of the fuel tank, the mounting points and the tank breather.			
Ejector hoses:	ENGINE	OK	
Ejector hoses: Check the ejector hoses and the clamps on the air filter cap.			
AdBlue tank (urea):	ENGINE	OK	
AdBlue tank (urea): Check the condition and tightness of the AdBlue tank.			
AdBlue filter (urea):	ENGINE	OK	
AdBlue filter (urea): Check if AdBlue filter is leaky. Observe the maintenance requirements based on operating hours and records.			
AdBlue hoses and fittings:	ENGINE	OK	

Description	Group	Result	Duration
AdBlue hoses and fittings: Check the hoses and fittings for leaks and damages.			
Exhaust system:	ENGINE	OK	
Exhaust system: Check the exhaust line and its connections as well as the heat shield for cracks and escaping particulates. Check the ejector hose.			
Dry-type air cleaner:	ENGINE	NOK	0.5
Dry-type air cleaner: Check the proper sealing and the cleanliness of the air filter and if it is cracked. Suggest a replacement according to the operating hours/annual maintenance interval.			
Exhaust gas aftertreatment (Ad blue):	ENGINE	OK	
Exhaust gas aftertreatment (Ad blue): Check the condition of the exhaust gas aftertreatment, if it is cracked and tight.			
Air filter and air filter safety cartridge:	ENGINE	OK	
Air filter and air filter safety cartridge: Check the proper sealing and the cleanliness of the air filter and the air filter safety cartridge and if they are cracked. Suggest a replacement according to the operating hours/annual maintenance interval.			
Additional tank (for fuel):	ENGINE	OK	
Additional tank (for fuel): Check the additional tank and its connections for leaks and possible damage.			
Wind vane:	ENGINE	OK	
Wind vane: Is the wind vane on the radiator straight (not bent) and does it rotate when the engine is running?			
Radiator screen	ENGINE	OK	
Radiator screen Check if the radiator screen is damaged.			
Cleaning of radiator screen:	ENGINE	OK	
Cleaning of radiator screen: Check the wear and free movement of the radiator cleaning arm, mount and bearing.			
Chaff screen cleaning suction arm:	ENGINE	OK	
Chaff screen cleaning suction arm: Check if the suction arm has the correct distance and the condition of brushes.			
Suction hose:	ENGINE	OK	
Suction hose: Check the condition and function of suction hose and if it is cracked.			
Radiator chaff screen hydraulic motor:	ENGINE	OK	
Radiator chaff screen hydraulic motor: Check the tightness of the hydraulic motor. In addition, check the mount and the drive coupler mount.			

Description	Group	Result	Duration
Checking the radiator:	ENGINE	NOK	1.0
Checking the radiator: Check the condition, tightness and function of all coolers and lines.			
Intercooler	ENGINE	OK	
Intercooler Check the condition and cleanliness of the intercooler.			
Transfer gearbox / bearing:	GEARBOX / CLUTCH / PTO DRIVE SHAFT	NOK	1.0
Transfer gearbox / bearing: Check if the transfer gearbox and the bearing has any particles adhering to the speed sensor and if there is any bearing damage. Remove/install the sensor for this check.			
Transfer gearbox at the engine output:	GEARBOX / CLUTCH / PTO DRIVE SHAFT	OK	
Transfer gearbox at the engine output: Check the condition and the correct oil level of the transfer gearbox and if the speed sensor is working properly and the breather is clean. Particles found on the speed sensor may indicate an early stage of bearing damage in the gearbox.			
Tyres and rim of the front axle	CHASSIS	NOK	
Tyres and rim of the front axle Check the condition and tightness of the tyres and the tightening torque of wheel bolts.			
Tyre pressure control system:	CHASSIS	OK	
Tyre pressure control system: Check if the tyre pressure control system is tight.			
Front axle final drive:	CHASSIS	NOK	1.0
Front axle final drive: Check the oil level in the front axle final drive. Write down the level. Observe the maintenance intervals and operating hours and change the oil if required.			
Axle transmission:	CHASSIS	OK	
Axle transmission: Check the tightness of the axle transmission and its correct oil level.			
Drive axle:	CHASSIS	OK	
Drive axle: Check if the drive axle is tight.			
Axle extension:	CHASSIS	OK	
Axle extension: Check the condition, tightness and correct bolted connection of the axle extension (dual wheels).			
Hydraulic lines / screw connections of the ground drive:	CHASSIS	OK	
Hydraulic lines / screw connections of the ground drive: Check the condition, routing and tightness of hydraulic lines and valves.			
Ground drive, pipes and threaded fitting	CHASSIS	OK	

Description	Group	Result	Duration
Ground drive, pipes and threaded fitting Check the condition, routing and tightness of lines and valves.			
Rear drive axle:	CHASSIS	OK	
Rear drive axle: Check the condition and tightness of the rear drive axle.			
Axle bolt / axle fastening	CHASSIS	OK	
Axle bolt / axle fastening Check the central swivel pin clearance and the pin wear.			
Rear axle tyres and rims:	CHASSIS	NOK	
Rear axle tyres and rims: Check the condition and tightness of the rear wheel and the rim condition.			
Ground drive:	CHASSIS	OK	
Ground drive: Check the condition and tightness of the ground drive.			
Ground drive: gearbox and pipes:	CHASSIS	OK	
Ground drive: gearbox and pipes: Check the condition and tightness of power transmission and lines.			
Compressed-air system:	BRAKE	OK	
Compressed-air system: Check if the compressed-air system and the pneumatic quick-release couplers are tight and check if the blow-down valve closes.			
Compressed-air system:	BRAKE	OK	
Compressed-air system: Check the condition and tightness of the dosing unit or drier and of lines and tanks (including the automatic water drain valve).			
Spring-operating storage	BRAKE	OK	
Spring-operating storage Check the condition of the parking brake spring-type cylinder.			
Brake valve of the service brake:	BRAKE	OK	
Brake valve of the service brake: Check the condition and tightness of the service brake valve.			
Hydraulic parking brake:	BRAKE	OK	
Hydraulic parking brake: Check the condition and tightness of the parking brake. Check the effectiveness by holding the machine on a short incline or ramp using only the parking brake. It should not move.			
Steering column / steering wheel adjustment	STEERING SYSTEM	NOK	2.0
Steering column / steering wheel adjustment Check if the steering column is cracked, adjustable and firmly fastened.			
Steering cylinder:	STEERING SYSTEM	OK	

Description	Group	Result	Duration
Steering cylinder: Check the tightness and condition of the steering cylinders.			
Checking the AUTO PILOT sensors:	STEERING SYSTEM	OK	
Checking the AUTO PILOT sensors: Check the steering angle sensor and linkage. The linkage must not be bent, damaged or heavily soiled.			
Orbitrol steering unit:	STEERING SYSTEM	OK	
Orbitrol steering unit: Check the condition and tightness of the ORBITROL steering unit.			
Hydraulic lines:	STEERING SYSTEM	OK	
Hydraulic lines: Check the tightness, condition and function of hydraulic lines and pressure accumulators beneath the cab.			
Trailer hitch:	Trailer hitch	NOK	
Trailer hitch: Check if the trailer hitch is cracked and if it is properly attached to the machine.			
V-ribbed belt of the main drive:	DRIVES	NOK	0.5
V-ribbed belt of the main drive: Check the V-ribbed belt of the main drive for condition and cracks.			
Feeder drive V-belt:	DRIVES	NOK	
Feeder drive V-belt: Check the condition and wear of the feeder drive ribbed V-belt.			
Main drive tensioning device:	DRIVES	OK	
Main drive tensioning device: Check the condition of the main drive tensioning device and the wear level of the bearings.			
Jockey and guide rollers:	DRIVES	NOK	1.0
Jockey and guide rollers: Check that the jockey pulleys move freely and check the bearings for play.			
Belt guard:	DRIVES	NOK	
Belt guard: Check the condition of belt guard and if it is cracked and properly fastened.			
Feeder unit jockey pulley:	DRIVES	OK	
Feeder unit jockey pulley: Check that the jockey pulley runs smoothly and check the bearings for play.			
Corn cracker jockey pulley:	DRIVES	NOK	0.5
Corn cracker jockey pulley: Check that the jockey pulley runs smoothly and check the bearings for play.			
Accelerator drive:	DRIVES	OK	
Accelerator drive:			

Description	Group	Result	Duration
Check if the accelerator drive and its pulley is clean. Removing dirt build-up from the pulley reduces vibrations.			
Pressure accumulator:	HYDRAULICS	OK	
Pressure accumulator: Check the condition and tightness of the pressure accumulator.			
Working hydraulics valve block:	HYDRAULICS	OK	
Working hydraulics valve block: Check the valve block for leaks and loose connectors.			
Hydraulic oil tank	HYDRAULICS	OK	
Hydraulic oil tank Check the condition, tightness and level of the hydraulic oil tank. This must be within the specification.			
Low-pressure hydraulics valve block:	HYDRAULICS	OK	
Low-pressure hydraulics valve block: Check the condition and tightness of the low-pressure hydraulics valve block.			
Hydraulic pumps:	HYDRAULICS	OK	
Hydraulic pumps: Check the condition and tightness of the hydraulic pumps.			
Hydraulic oil filter:	HYDRAULICS	NOK	2.0
Hydraulic oil filter: Check the condition and tightness of the hydraulic oil filter.			
Hydraulic lines in the engine compartment:	HYDRAULICS	OK	
Hydraulic lines in the engine compartment: Check the condition, routing and tightness of the hydraulic lines.			
Check the hydraulic oil cooler:	HYDRAULICS	OK	
Check the hydraulic oil cooler: Check the condition, tightness and function of all coolers and lines.			
Front attachment quick-release coupler:	HYDRAULICS	OK	
Front attachment quick-release coupler: Check the condition, corrosion level and tightness of the quick-release coupler. (electric and hydraulic)			
Hydraulic lines / screw connections on the left side of the machine:	HYDRAULICS	OK	
Hydraulic lines / screw connections on the left side of the machine: Check the condition, routing and tightness of hydraulic lines / screw fittings.			
Parking brake multifunction block:	HYDRAULICS	OK	
Parking brake multifunction block: Check the condition and tightness of the parking brake multifunction block and if the electrical contacts are intact.			
Record operating hours	ELECTRICS / ELECTRONICS	2883 h	

Description	Group	Result	Duration
Record operating hours Record the operating hours of the machine. Enter after rounding off to full hours.			
Cab wiring:	ELECTRICS / ELECTRONICS	NOK	2.0
Cab wiring: Check the condition, routing and fixing of the cab wiring as well as loose plug contacts.			
Deleting fault codes in the CDS:	ELECTRICS / ELECTRONICS	NOK	
Deleting fault codes in the CDS: Delete all fault codes in the CLAAS DIAGNOSTIC SYSTEM.			
Software update:	ELECTRICS / ELECTRONICS	NOK	2.0
Software update: Check the software status with the CDS, record the statuses and prepare a quotation. Prepare a machine report.			
Central control box:	ELECTRICS / ELECTRONICS	OK	
Central control box: Check the cleanliness and condition of the central control box.			
Carrying out a test run:	ELECTRICS / ELECTRONICS	NOK	4.0
Carrying out a test run: No persons are allowed in the hazard area during the test run. Now check all machine functions in a test run. To do this, check the speeds in CEBIS and check all teaching-in processes for limit switches, the hydrostatic feeder drive speeds and quick stop as specified in the Technical Systems documentation; check the emergency brake function.			
Ignition switch:	ELECTRICS / ELECTRONICS	OK	
Ignition switch: Check the condition and function of the ignition switch.			
Engine temperature display:	ELECTRICS / ELECTRONICS	OK	
Engine temperature display: Check the engine temperature display in CEBIS.			
Battery:	ELECTRICS / ELECTRONICS	OK	
Battery: Check the battery for proper attachment and correct voltage and carry out a load test.			
Checking the CEBIS functions:	ELECTRICS / ELECTRONICS	OK	
Checking the CEBIS functions: Check if all integrated computer functions work properly and flawlessly.			
Battery isolating switch	ELECTRICS / ELECTRONICS	OK	
Battery isolating switch Check the condition and function of the battery isolating switch.			
Shear bar adjustment in CEBIS:	ELECTRICS / ELECTRONICS	OK	
Shear bar adjustment in CEBIS: Check the correct function of the shear bar adjustment device knock sensors.			
Battery cable minus:	ELECTRICS / ELECTRONICS	OK	

Description	Group	Result	Duration
Battery cable minus: Check the battery cable of the negative terminal for a low-resistance connection to earth.			
Activate automatic shear bar adjustment device	ELECTRICS / ELECTRONICS	OK	
Activate automatic shear bar adjustment device Activate automatic shear bar adjustment device in the CEBIS			
Checking the multi function lever (C-motion):	ELECTRICS / ELECTRONICS	OK	
Checking the multi function lever (C-motion): Test all functions of the multi function lever.			
Lubrication time monitoring:	ELECTRICS / ELECTRONICS	OK	
Lubrication time monitoring: This is a feature monitoring if all scheduled maintenance operations were carried out. Trigger the lubrication manually directly during the test run (works only when the drum is rotating)			
Control terminal:	ELECTRICS / ELECTRONICS	NOK	2.0
Control terminal: Check all control terminal functions.			
Checking the turn flashers:	ELECTRICS / ELECTRONICS	NOK	1.0
Checking the turn flashers: Check the condition, fastening on the machine and the function of turn flashers.			
Checking the rear camera:	ELECTRICS / ELECTRONICS	OK	
Checking the rear camera: Check the condition, fastening and function of the rear camera.			
PROFI CAM:	ELECTRICS / ELECTRONICS	OK	
PROFI CAM: Check the condition, machine safeguarding and function of the PROFI CAM system.			
Maintenance compartment wiring looms:	ELECTRICS / ELECTRONICS	OK	
Maintenance compartment wiring looms: Check the condition and routing of the maintenance compartment wiring looms.			
Road lighting:	ELECTRICS / ELECTRONICS	OK	
Road lighting: Check the condition and function of the road lighting.			
Work lighting:	ELECTRICS / ELECTRONICS	OK	
Work lighting: Check the condition and function of work lights.			
Maintenance lights:	ELECTRICS / ELECTRONICS	OK	
Maintenance lights: Check the condition and function of the maintenance lights.			

Description	Group	Result	Duration
Warning beacon:	ELECTRICS / ELECTRONICS	OK	
Warning beacon: Check the condition and function of the warning beacons.			
Dry matter content sensor:	ELECTRICS / ELECTRONICS	OK	
Dry matter content sensor: Check the wear condition of the dry matter content sensor.			
NIR sensor measuring head unit:	ELECTRICS / ELECTRONICS	NOK	2.0
NIR sensor measuring head unit: Check if the glass is clean.			
Checking the discharge flap lights adjustment:	ELECTRICS / ELECTRONICS	NOK	0.5
Checking the discharge flap lights adjustment: Check the function and fastening of the discharge flap lights as well as the correct adjustment of the discharge flap.			
Option box:	ELECTRICS / ELECTRONICS	OK	
Option box: Check the tightness of the option box and if it is damaged, and check the wiring in the maintenance compartment.			
Checking the cab filter:	CAB / OPERATOR'S PLATFORM	NOK	2.0
Checking the cab filter: Check the proper sealing and the cleanliness of the cab filter and if it is cracked. Suggest a replacement according to the operating hours/annual maintenance interval.			
Sun blind:	CAB / OPERATOR'S PLATFORM	OK	
Sun blind: Check the condition and function of the sun blind.			
Cab glazing:	CAB / OPERATOR'S PLATFORM	OK	
Cab glazing: Check the condition and tightness of the cab glazing joint and if it is cracked.			
Safety belts:	CAB / OPERATOR'S PLATFORM	OK	
Safety belts: Check the condition, fastening to the machine and proper locking of the safety belts.			
Driver's seat:	CAB / OPERATOR'S PLATFORM	OK	
Driver's seat: Check the condition, adjustment and function of the driver's seat.			
Instructor's seat:	CAB / OPERATOR'S PLATFORM	OK	
Instructor's seat: Check the condition and safe fastening of the instructor's seat.			
Central control box, covering:	CAB / OPERATOR'S PLATFORM	OK	
Central control box, covering: Check the condition of the control box covering and if it is cracked.			

Description	Group	Result	Duration
Air conditioner drier:	CAB / OPERATOR'S PLATFORM	OK	
Air conditioner drier: Check the filter dryer at the sight glass for water accumulation or color change. For details, see operator's manual chapter 9.10. (Maintenance > Cab > Moisture saturation of the filter dryer)			
Variable-speed gearbox:	CAB / OPERATOR'S PLATFORM	OK	
Variable-speed gearbox: Check the function of the variable-speed gearbox (gearshift linkage).			
Armrest adjustment:	CAB / OPERATOR'S PLATFORM	NOK	1.0
Armrest adjustment: Check the condition and function of the armrest adjustment.			
Electric mirror adjustment:	CAB / OPERATOR'S PLATFORM	OK	
Electric mirror adjustment: Try out the mirror adjustment. Listen out for noises.			
Exterior rear-view mirror:	CAB / OPERATOR'S PLATFORM	OK	
Exterior rear-view mirror: Check the condition and safe fastening of the exterior rear-view mirror.			
Windscreen wiper motor:	CAB / OPERATOR'S PLATFORM	NOK	1.0
Windscreen wiper motor: Check the function and proper hose and wiring guiding of the windscreen wiper motor.			
Windscreen washer:	CAB / OPERATOR'S PLATFORM	NOK	0.5
Windscreen washer: Check the condition of windscreen wipers and the function of nozzles.			
Blower:	CAB / OPERATOR'S PLATFORM	OK	
Blower: Check the condition and function of the fan.			
Air conditioner / AC Matic:	CAB / OPERATOR'S PLATFORM	OK	
Air conditioner / AC Matic: Check the functional readiness and proper temperature control.			
Cooler compartment / cool box:	CAB / OPERATOR'S PLATFORM	NOK	0.5
Cooler compartment / cool box: Check the condition of the cooler compartment and if it cools properly.			
Heater / air conditioner hoses:	CAB / OPERATOR'S PLATFORM	OK	
Heater / air conditioner hoses: Check the condition, routing and tightness of heater and air conditioner hoses.			
Condenser air conditioner	CAB / OPERATOR'S PLATFORM	OK	
Condenser air conditioner Check the condition and tightness of the air conditioner condenser.			

Description	Group	Result	Duration
Cab supports:	CAB / OPERATOR'S PLATFORM	OK	
Cab supports: Check the condition and the tight seat of the cab supports.			
Hydraulic lines / screw connections on the left side of the machine:	CROP FEEDING	OK	
Hydraulic lines / screw connections on the left side of the machine: Check the condition and tightness of the hydraulic oil tank, lines and screw fittings.			
Front attachment drive PTO drive shaft:	CROP FEEDING	OK	
Front attachment drive PTO drive shaft: Check the condition, wear and proper lubrication of the PTO drives for the front attachment.			
Front attachment drive quick-release coupler (receiving coupler):	CROP FEEDING	OK	
Front attachment drive quick-release coupler (receiving coupler): Check the condition and tightness of the mechanical front attachment drive quick-release coupler.			
PTO drive:	CROP FEEDING	NOK	1.0
PTO drive: Check the condition, wear and good lubrication of the front attachment PTO shaft.			
Feeder unit hydraulic cylinder:	FEEDER UNIT	NOK	
Feeder unit hydraulic cylinder: Check the condition, tightness and cylinder rod condition of the hydraulic pre-compression hydraulic cylinder.			
Hydraulic feeder unit lines:	FEEDER UNIT	OK	
Hydraulic feeder unit lines: Check the condition, routing and tightness of the feeder unit hydraulic lines.			
Hydraulic damper:	FEEDER UNIT	OK	
Hydraulic damper: Check the tightness of the feeder unit hydraulic damper.			
Gearbox of the upper rollers:	FEEDER UNIT	NOK	
Gearbox of the upper rollers: Check the condition and tightness of the upper roller gearbox as well as its oil level.			
Fastening of pulley / feeder unit:	FEEDER UNIT	OK	
Fastening of pulley / feeder unit: Check the condition and function of the jockey pulley and of guide rollers.			
Constant level of feeder unit:	FEEDER UNIT	OK	
Constant level of feeder unit: Check the condition and tightness of the feeder unit constant level cylinder. Check the maintenance requirement according to the maintenance schedule.			
Gearbox of the precompression rollers	FEEDER UNIT	NOK	1.0
Gearbox of the precompression rollers			

Description	Group	Result	Duration
Check the condition and tightness of the precompression rollers' gearbox as well as its oil level. Remove the speed sensor, check if it is soiled and clean it.			
Upper pre-compression rollers:	FEEDER UNIT	OK	
Upper pre-compression rollers: Check the condition and wear of the upper pre-compression rollers.			
Lower precompression rollers:	FEEDER UNIT	NOK	6.0
Lower precompression rollers: Check the condition and wear of the lower pre-compression rollers.			
Precompression rollers' couplers:	FEEDER UNIT	OK	
Precompression rollers' couplers: Check the condition and wear of the precompression rollers' wear bars.			
Mechanical front attachment drive:	FEEDER UNIT	OK	
Mechanical front attachment drive: Check the condition and wear of belts, pulleys and bearings.			
Feeder unit locking device:	FEEDER UNIT	OK	
Feeder unit locking device:  Check the function and wear of the feeder unit locking device and fold the feeder unit open as described in the Operator's Manual. Observe the safety precautions!			
Feeder unit locking monitoring sensor:	FEEDER UNIT	OK	
Feeder unit locking monitoring sensor: Check the condition and function of the feeder unit locking monitoring sensor and its linkage (rope).			
Corn cracker intermediate drive:	FEEDER UNIT	OK	
Corn cracker intermediate drive: Check the condition and alignment of the corn cracker intermediate drive.			
Feeder unit housing:	FEEDER UNIT	OK	
Feeder unit housing: Check the condition of the feeder unit housing and if it is cracked.			
Feeder unit sealing rubbers:	FEEDER UNIT	OK	
Feeder unit sealing rubbers: Check the rubber seal of the feeder unit for damage and wear			
Feeder unit cover plate:	FEEDER UNIT	OK	
Feeder unit cover plate: Check the condition, proper sealing and wear of the feeder unit cover plate.			
Feeder unit floor plate:	FEEDER UNIT	NOK	
Feeder unit floor plate: Check the condition, proper sealing and wear of the feeder unit floor plate.			

Description	Group	Result	Duration
Upper rear roller:	FEEDER UNIT	OK	
Upper rear roller: Check the condition and wear of the upper rear roller.			
Smooth roller:	FEEDER UNIT	OK	
Smooth roller: Check the condition and wear of the upper rear roller.			
Smooth roller scraper:	FEEDER UNIT	OK	
Smooth roller scraper: Check the condition, wear and flawless gap of the smooth roller scraper.			
Feeder unit wear plates:	FEEDER UNIT	OK	
Feeder unit wear plates: Check the condition of feeder unit wear plates and if they are cracked and properly fastened. The necessity of replacement is based on the specifications provided in the relevant manuals.			
Feeder unit hydraulic pump:	FEEDER UNIT	OK	
Feeder unit hydraulic pump: Check the condition and tightness of the feeder unit hydraulic pump.			
Checking the spindle swing torque:	FEEDER UNIT	NOK	1.0
Checking the spindle swing torque: Check the spindle swing torque as well as its condition regarding corrosion and wear.			
Gearshift linkage:	FEEDER UNIT	OK	
Gearshift linkage: Check the condition and tightness of leadthroughs of the gearshift linkage.			
Metalldetektor prüfen:	FEEDER UNIT	OK	
Dirt protection roller blind:	FEEDER UNIT	NOK	
Dirt protection roller blind: Check the condition and function of the dirt protection roller blind.			
Drive of feeder unit:	ADAPTER	OK	
Drive of feeder unit: Check if the feeder unit drive is worn or leaky.			
Tension springs:	ADAPTER	OK	
Tension springs: Check the condition of the tension springs for the pre-tensioning roller.			
Feeder unit roller bearing:	ADAPTER	OK	
Feeder unit roller bearing: Check if the feeder unit rolling bearing shows any clearance.			
Lift/lower hydraulic cylinder:	CHOPPING	OK	
Lift/lower hydraulic cylinder:			

Description	Group	Result	Duration
Check the condition, tightness and cylinder rod condition of the front attachment carrier hydraulic cylinder.			
Chopping cylinder concave:	CHOPPING	OK	
Chopping cylinder concave: Check if the chopping cylinder concave is working properly, worn or cracked.			
Chopper unit hydraulic lines:	CHOPPING	OK	
Chopper unit hydraulic lines: Check the condition, routing and tightness of the chopper unit hydraulic lines.			
Sharpening unit covering:	CHOPPING	OK	
Sharpening unit covering: Check if the sharpening unit covering is damaged and safety fastened.			
Sharpening unit with chain and adjustment:	CHOPPING	NOK	
Sharpening unit with chain and adjustment: Check the correct chain tension and cleanliness of the sharpening unit. Is the coupler finger still in place?			
Chopper unit sharpening device flap:	CHOPPING	OK	
Chopper unit sharpening device flap: Check the function of the chopper unit sharpening device flap and its proper sealing.			
Sharpening stone:	CHOPPING	NOK	
Sharpening stone: Check if the sharpening stone is worn and adjust as needed. NOTE: Checking the status in CEBIS			
Sharpening device hydraulic cylinder:	CHOPPING	OK	
Sharpening device hydraulic cylinder: Check the condition and tightness of the sharpening device hydraulic cylinder.			
Hydraulic cylinder for sharpening stone:	CHOPPING	OK	
Hydraulic cylinder for sharpening stone: Check the condition and tightness of the sharpening stone hydraulic cylinder.			
Hydraulic quick-release coupling of chopper unit:	CHOPPING	OK	
Hydraulic quick-release coupling of chopper unit: Check the condition and tightness of the hydraulic quick-release coupling of the chopper unit.			
Shear bar support:	CHOPPING	NOK	1.0
Shear bar support: Check the condition and wear of the shear bar support.			
Spindle adjusting unit:	CHOPPING	OK	
Spindle adjusting unit: Check the condition and wear of the shear bar adjusting unit.			
Hydraulic clamping of the pivot lever:	CHOPPING	OK	

Description	Group	Result	Duration
Hydraulic clamping of the pivot lever: Check the condition of the hydraulic swing lever clamping and check for leaks.			
Shear bar support wear strip:	CHOPPING	OK	
Shear bar support wear strip: Check the condition and wear of the shear bar support wear strip.			
Chopping cylinder concave:	CHOPPING	OK	
Chopping cylinder concave: Check the condition and wear of the chopping cylinder concave.			
Chopping cylinder:	CHOPPING	OK	
Chopping cylinder: Check the condition and balance of the chopping cylinder and if it is cracked or shows signs of wear.			
Cutting cylinder knives:	CHOPPING	NOK	8.0
Cutting cylinder knives: Check the condition of the cutting cylinder knives and if they are worn or cracked. Note: For wear limits and replacement recommendations, see the Operator's Manual.			
Thrust pieces for knife fastener:	CHOPPING	OK	
Thrust pieces for knife fastener: Check the condition and wear of the knives clamping thrust pieces.			
Knife bolts:	CHOPPING	OK	
Knife bolts: Check the condition and wear of the knife bolts.			
Knife carriers / cylinder plate:	CHOPPING	OK	
Knife carriers / cylinder plate: Check the condition and wear of the knife carriers and the cylinder plate.			
Chopping cylinder / bearing:	CHOPPING	OK	
Chopping cylinder / bearing: Check the condition and clearance of the chopping cylinder and its bearings.			
Chopping cylinder drive:	CHOPPING	OK	
Chopping cylinder drive: Check if the chopping cylinder drive is worn and clean (pulley).			
Chopper unit housing:	BALING SYSTEM	OK	
Chopper unit housing: Check the condition and wear of the chopper unit housing and if it is cracked.			
Silage additive system pump:	DISCHARGING	NOK	2.0
Silage additive system pump: Check the condition, tightness and function of the silage additive system pump. If possible, check the silage additive system flushing function.			
Corncracker housing	DISCHARGING	NOK	

Description	Group	Result	Duration
Corncracker housing Check the housing wear, the condition of bearings and if coarse soiling has occurred.			
Filter for silage additive system:	DISCHARGING	NOK	0.5
Filter for silage additive system: Check the condition, tightness and function of the silage additive system filter.			
Housing seal from corncracker	DISCHARGING	OK	
Housing seal from corncracker Check the condition of the corn cracker housing seal.			
Corncracker rolling	DISCHARGING	NOK	8.0
Corncracker rolling Check the condition and wear of corn cracker rollers.			
Corn cracker wear plates:	DISCHARGING	OK	
Corn cracker wear plates: Check the condition and wear of corn cracker wear plates. Observe the wear limits!			
Stripper corncracker:	DISCHARGING	OK	
Stripper corncracker: Check the condition and wear of the corn cracker scraper.			
Corn cracker gap adjustment:	DISCHARGING	NOK	
Corn cracker gap adjustment: Check if the rollers are parallel with respect to one another.			
Corn cracker lubrication lines:	DISCHARGING	OK	
Corn cracker lubrication lines: Check the condition and tightness of corn cracker lubrication lines.			
Checking the guide plate:	DISCHARGING	OK	
Checking the guide plate: Check the function and wear of the guide plate and if it is cracked and check the tightness of the hydraulic cylinder and the line.			
Silage additive tank:	DISCHARGING	OK	
Silage additive tank: Check the condition and the tightness of the silage additive tank.			
Hydraulic cylinders of the corncrackers:	DISCHARGING	OK	
Hydraulic cylinders of the corncrackers: Check the condition and tightness of the tensioning arm hydraulic cylinder.			
Grass chute	DISCHARGING	OK	
Grass chute Check the condition, wear and fastening of the grass chute and if it is cracked. (install again only when all tests are completed)			
Guide plate:	DISCHARGING	OK	

Description	Group	Result	Duration
Guide plate: Check the condition of the guide plate and if it is worn or cracked.			
Upper discharge chute hydraulic cylinder:	DISCHARGING	OK	
Upper discharge chute hydraulic cylinder: Check the condition, routing and tightness of the upper discharge chute hydraulic cylinder including its lines.			
Upper discharge chute wiring loom:	DISCHARGING	OK	
Upper discharge chute wiring loom: Check if the upper discharge chute wiring loom shows any chafing patches and its general condition.			
Lower discharge chute wear plates:	DISCHARGING	OK	
Lower discharge chute wear plates: Check the condition and wear of the lower discharge chute wear plates.			
Sealing profile of lower discharge chute:	DISCHARGING	OK	
Sealing profile of lower discharge chute: Checking the condition of profiled joint and if it is cracked			
Accelerator housing	DISCHARGING	OK	
Accelerator housing Check the condition and wear of the discharge section back panel.			
Discharge guide plate:	DISCHARGING	OK	
Discharge guide plate: Check the condition of the discharge guide plate and if it is cracked			
Accelerant	DISCHARGING	OK	
Accelerant Check the condition of the accelerator rotor and if it is cracked or worn.			
NIR / TM sensor wiring:	DISCHARGING	OK	
NIR / TM sensor wiring: Check the function and the connecting wires of NIR/TM sensors if they show any kinks/chafing patches.			
Accelerator bearings:	DISCHARGING	NOK	8.0
Accelerator bearings: Check the wear of the accelerator bearings, using a dial indicator.			
Accelerator paddles:	DISCHARGING	OK	
Accelerator paddles: Check the condition of the accelerator paddles and if they are cracked or worn.			
Accelerator shaft:	DISCHARGING	OK	
Accelerator shaft: Check the condition and wear of the accelerator shaft.			
Upper discharge chute:	DISCHARGING	NOK	2.0
Upper discharge chute:			

Description	Group	Result	Duration
Check the condition and wear of the upper discharge chute.			
Electric accelerator gap adjustment:	DISCHARGING	NOK	0.5
Electric accelerator gap adjustment: Check the function of the accelerator electric gap adjustment. Compare the CEMIS value with the actual gap.			
Upper discharge flap:	DISCHARGING	NOK	1.0
Upper discharge flap: Check if the upper discharge flap is worn or cracked and carry out a function test.			
Hydraulic accelerator gap adjustment:	DISCHARGING	OK	
Hydraulic accelerator gap adjustment: Check the function of the accelerator hydraulic gap adjustment. Compare the CEMIS value with the actual gap.			
Lift/lower hydraulic cylinder:	DISCHARGING	OK	
Lift/lower hydraulic cylinder: Check the condition and tightness of the discharge flap lift/lower hydraulic cylinder.			
Lower discharge chute wear plates:	DISCHARGING	OK	
Lower discharge chute wear plates: Check if the lower discharge chute wear plates are worn.			
Rotation ring and drive:	DISCHARGING	OK	
Rotation ring and drive: Check the wear, tightness and function of the collision protection			
Lower discharge chute swivel angle sensor:	DISCHARGING	OK	
Lower discharge chute swivel angle sensor: Checking the functional readiness of the lower discharge chute swivel angle sensor			
Lower discharge chute gear rim:	DISCHARGING	OK	
Lower discharge chute gear rim: Check the condition and wear of the lower discharge chute gear rim.			
Optifill components:	DISCHARGING	OK	
Optifill components: Check the function of the Optifill angle sensor including the gear.			
Upper discharge chute hose package:	DISCHARGING	OK	
Upper discharge chute hose package: Check if the upper discharge chute hose package is damaged or shows chafing patches.			
ACTISILER wiring loom:	DISCHARGING	OK	
ACTISILER wiring loom: Check the condition and routing of the silage additive system wiring loom.			
Dosing unit ACTISILIER:	DISCHARGING	NOK	0.5
Dosing unit ACTISILIER:			

Description	Group	Result	Duration
Check the condition and function of the ACTISILER dosing unit.			
Silage additive system (ACTISILER) lines:	DISCHARGING	OK	
Silage additive system (ACTISILER) lines: Check the condition and tightness of the lines.			
Silage additive system:	DISCHARGING	OK	
Silage additive system: Check the condition and cleanliness of the silage additive system.			
Silage additive system (ACTISILER) tank:	DISCHARGING	NOK	1.0
Silage additive system (ACTISILER) tank: Check if the silage additive system (ACTISILER) tank is tight or damaged.			
Nozzle of ACTISILER:	DISCHARGING	OK	
Nozzle of ACTISILER: Check the condition and cleanliness of the ACTISILER nozzle. Ensure that neither the line nor the nozzle is clogged.			
Feeder unit lubrication lines:	CENTRAL LUBRICATION SYSTEM	OK	
Feeder unit lubrication lines: Check the condition and tightness of the feeder unit lubrication lines.			
Central lubrication system non-return valve:	CENTRAL LUBRICATION SYSTEM	OK	
Central lubrication system non-return valve: Check the function of the central lubrication system non-return valve.			
Lubricant reservoir:	CENTRAL LUBRICATION SYSTEM	NOK	0.5
Lubricant reservoir: Check the condition and fill level of the lubricant reservoir.			
Lubricant pump:	CENTRAL LUBRICATION SYSTEM	OK	
Lubricant pump: Check the tightness of the lubricant distributor and the pump function.			
Lubrication lines and connections:	CENTRAL LUBRICATION SYSTEM	OK	
Lubrication lines and connections: Check the condition and tightness of the lubrication lines and valves.			
Chopper unit lubrication lines:	CENTRAL LUBRICATION SYSTEM	OK	
Chopper unit lubrication lines: Check the condition and tightness of the chopper unit lubrication lines.			
Checking if the left side panel is cracked:	ATTACHMENT PARTS, MACHINE BODY	NOK	1.0
Checking if the left side panel is cracked: Check the condition of the left side panel including the damper, and see if it is cracked. Leave in the open position.			
Check the rear panel for cracks:	ATTACHMENT PARTS, MACHINE BODY	OK	
Check the rear panel for cracks:			

Description	Group	Result	Duration
Check the rear panel and the damper for condition and cracks. Leave in open position.			
Checking the right side panel:	ATTACHMENT PARTS, MACHINE BODY	NOK	1.0
Checking the right side panel: Check the condition of the right side panel including the damper, and see if it is cracked. Leave in the open position.			
Checking the safety decals:	ATTACHMENT PARTS, MACHINE BODY	OK	
Checking the safety decals: Check that all warning stickers are still present and legible. An overview can be found in the Parts doc under assembly number 8045120.			
Rear weight, ballast weights:	ATTACHMENT PARTS, MACHINE BODY	NOK	
Rear weight, ballast weights: Check the condition and proper fastening.			
Horn:	ATTACHMENT PARTS, MACHINE BODY	OK	
Horn: Check the function and cable routing of the horn			
Back-up horn:	ATTACHMENT PARTS, MACHINE BODY	OK	
Back-up horn: Check the function and cable routing of the back-up horn.			
Recording the customer's issues:	ENTIRE MACHINE	NOK	
Recording the customer's issues: Ask customers about problems during the harvest and make a note of them. To do this, click on the X in the checkpoint.			
Test drive	ENTIRE MACHINE	NOK	1.0
Test drive - Carry out a test drive.- Check the service brake and the parking brake.- Drive the machine in all forward gears and all reverse gears.- Check the maximum ground speed forward.- Check the function of all control elements, switches and monitoring devices.			
Clutch disc of main drive:	From the left	OK	
Clutch disc of main drive: Check clutch behaviour by engaging and disengaging the clutch at different speeds. Pay attention to any unusual noises.			
Starter:	From the left	OK	
Starter: Check the installation of the starter on the flywheel housing. Check the wiring routing and connections on the starter.			
<b>Labour time</b>		<b>Σ</b>	<b>83.0</b>

## Materials

Material No.	Description	Group	Quantity
0005596460	POCKET FILTER	1210120 - EXTERIOR ROOF TRIM	2 piece
0005470390	WIPER BLADE	1210400 - FRONT WINDSCREEN WIPER	1 piece
0024017591	WEAR PLATE	6230150 - UPPER DISCHARGE CHUTE EXTENSION	1 piece
0027673620	FILTER ELEMENT	0125 - INJECTION / FUEL SYSTEM	1 piece
0007732230	FUEL FILTER	0125 - INJECTION / FUEL SYSTEM	1 piece
0024022701	AIR FILTER ELEMENT	0145120 - AIR FILTER	2 piece
0027530190	SPHERICAL ROLLER BEARING	6215150 - ACCELERATOR	2 piece
0027854470	HOUSING COVER	6215150 - ACCELERATOR	2 piece
0026415780	HOSE RETAINER	6235200 - METERING SYSTEM	2 piece
0001516870	SEAL KIT	2105840 - FEEDER DRIVE HYDRAULIC CYLINDER	1 piece
0013904550	GRINDSTONE	4425100 - KNIFE SHARPENER	1 piece
0026387010	R/H KNIFE KIT	4420100 - CUTTING CYLINDER	3 piece
0026387000	L/H KNIFE KIT	4420100 - CUTTING CYLINDER	3 piece
0013909001	COVERING	4420100 - CUTTING CYLINDER	12 piece
0002176541	SPHERICAL ROLLER BEARING	6205100 - HOUSING	4 piece
0029436970	ROLLER ASS.	6205150 - ROLLERS, FRONT	1 piece
0029395420	ROLLER ASS.	6205150 - ROLLERS, FRONT	1 piece